

Inwood Business Center

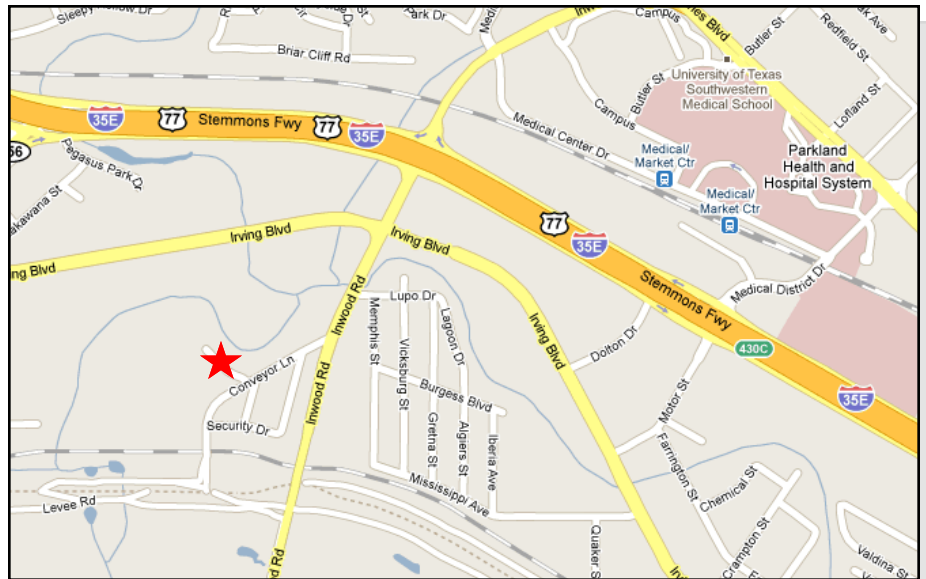
**1137 Conveyor Lane
Dallas, Texas**



Inwood Business Center is a ten (10) building, multi-tenant industrial park consisting of approximately 630,000 square feet with convenient access to I-35 E, Hwy 183 and Irving Blvd. Individual buildings can accommodate tenants seeking of-office/showroom/warehouse/distribution space from 2,000 to 35,000 square feet, depending on availability.

Building Features:

- 62,977 Total Square Feet
- Suites Ranging from 1,500 - 22,000 SF
- Ramp and Dock-high Loading Capabilities
- 100' Building Depth
- 16' Clear Height
- Convenient Access Off I-35 E



The information contained herein has been obtained from sources deemed reliable; however Vantage Companies makes no guarantees, warranties or representations as to the completeness or accuracy thereof.

Brett McMillan
Vice President - Marketing

972.480.8991
bmcmillan@vantagebc.com
www.vantagecompanies.com

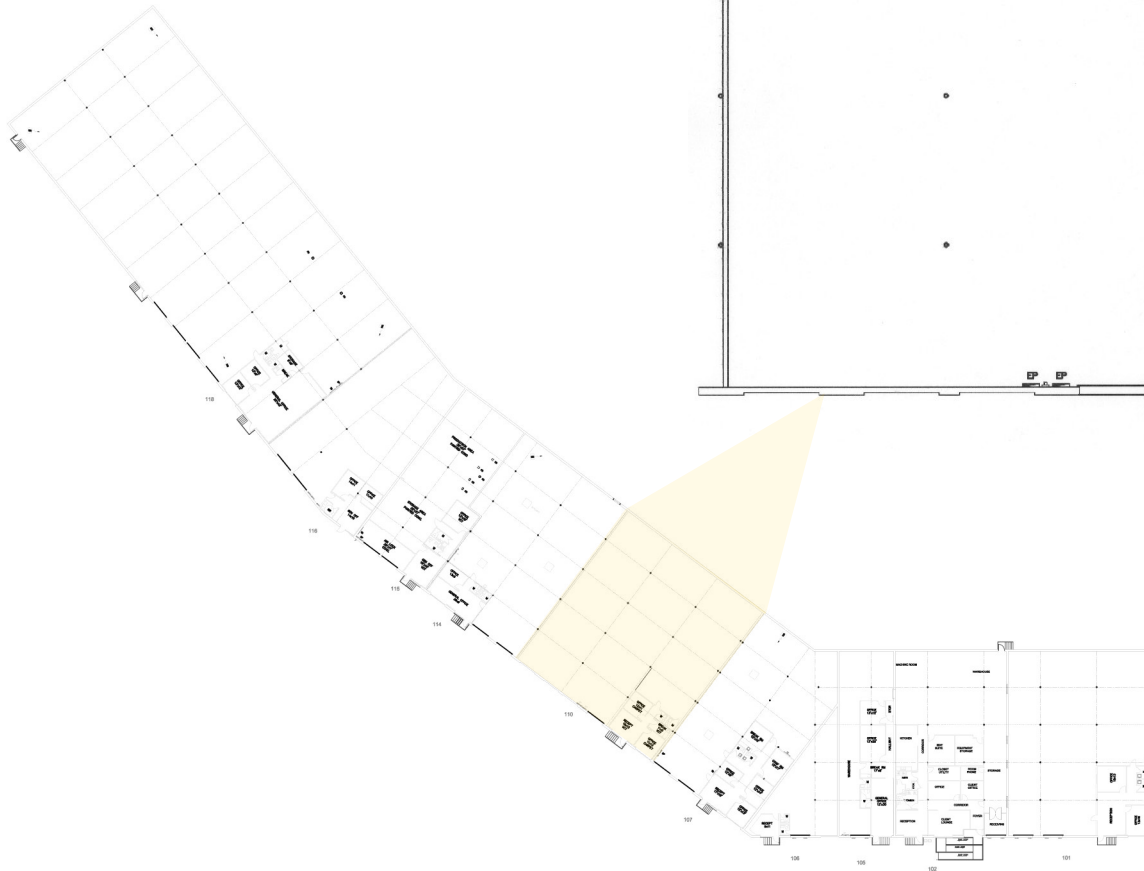
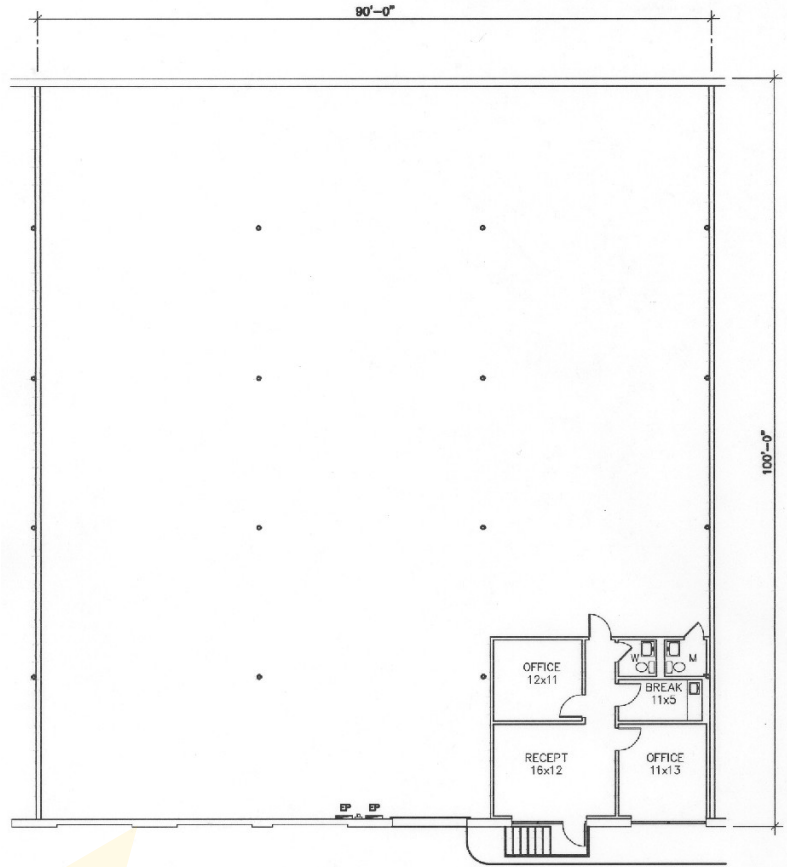
Vantage
Companies

Inwood Business Center is a ten (10) building, multi-tenant industrial park consisting of approximately 630,000 square feet with convenient access to I-35 E, Hwy 183 and Irving Blvd. Individual buildings can accommodate tenants seeking office/showroom/warehouse/distribution space from 2,000 to 35,000 square feet, depending on availability.

Space Details:

- 9,000 Total Square Feet
- 716 Square Feet of Office Area (8%)
- 1 Dock-High Loading Door
- Air-conditioned Warehouse Area
- 100' Building Depth
- Bay Depth: approximately 20' x 30'
- Convenient Access Off I-35 E

1137 Conveyor Lane, Suite 110



The information contained herein has been obtained from sources deemed reliable; however Vantage Companies makes no guarantees, warranties or representations as to the completeness or accuracy thereof.

Brett McMillan
Vice President - Marketing

972.480.8991
bmcmillan@vantagetbc.com
www.vantagecompanies.com

Vantage[®]
Companies